

## Setup guide to the wireless network eduroam at the University of Aarhus

eduroam is the free wireless network service for the students and employees at the University of Aarhus. With eduroam you get access to the Internet at a number of Danish and foreign Universities

As soon as you connect to the wireless network you're asked to type in your credentials. They are then encrypted and sent to your home institution to check whether you are indeed registered as active user. If the answer is yes, you will be let on to the Internet.

From the moment you have been authenticated via eduroam, your wireless connection will be encrypted to ensure that nobody can sniff your traffic in the air (between your machine and the wireless access point). This will be true for as long as you keep the connection alive. If you authenticate using a webpage, this will not be true. For this reason, and other security related arguments, the weblogin method is being phased out and should not be trusted.

This setup guide is based on a Danish installation of Windows Vista. We hope that you can compare the following menus and banners with your own version of Windows, so that you can make the right setup.

Before you can connect to the network, you need to do some configurations:

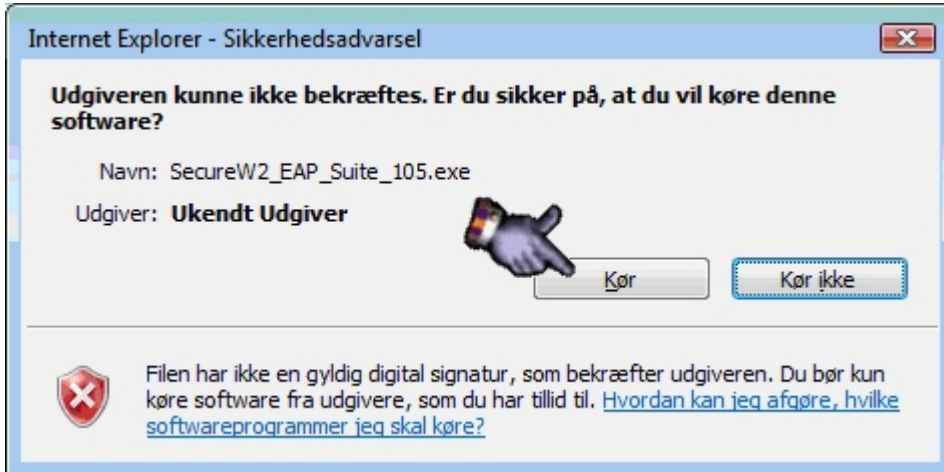
1. Download and install an EAP-TTLS client programme.
2. Configuring the wireless network connection at your computer.

### Download and install the client programme

Download the [SecureW2](http://www.eduroam.au.dk/securew2_eap_suite_105.exe) client. (www.eduroam.au.dk/securew2\_eap\_suite\_105.exe)

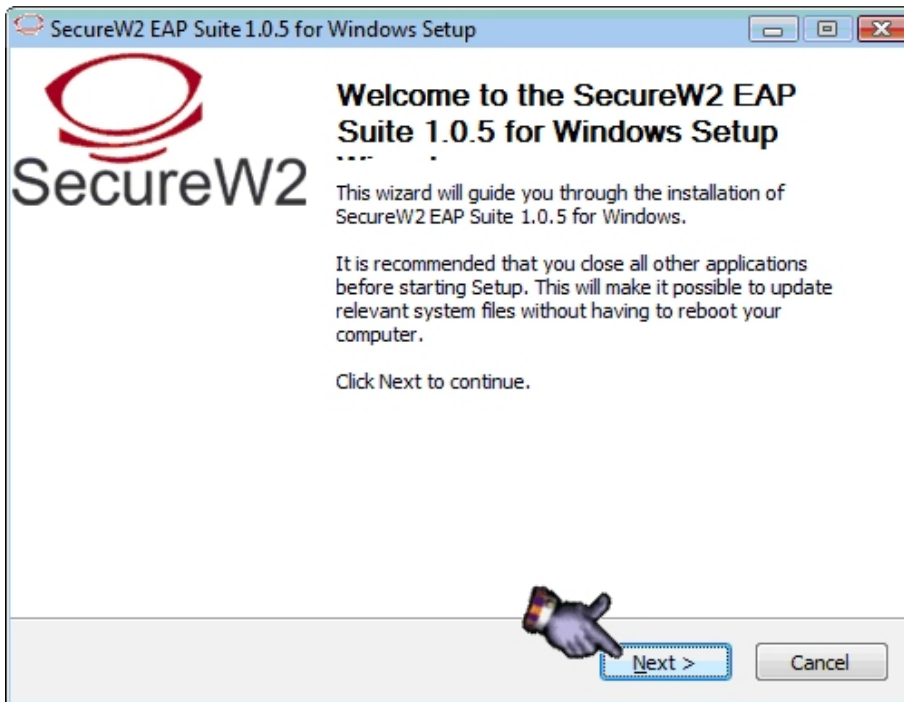


Press **Kør**

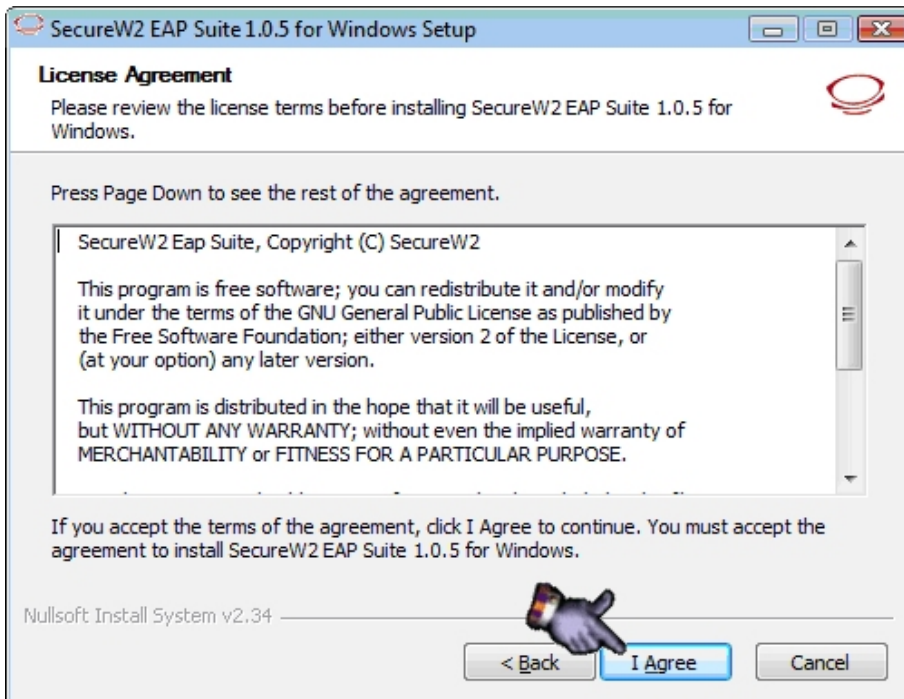


Press **Kør**

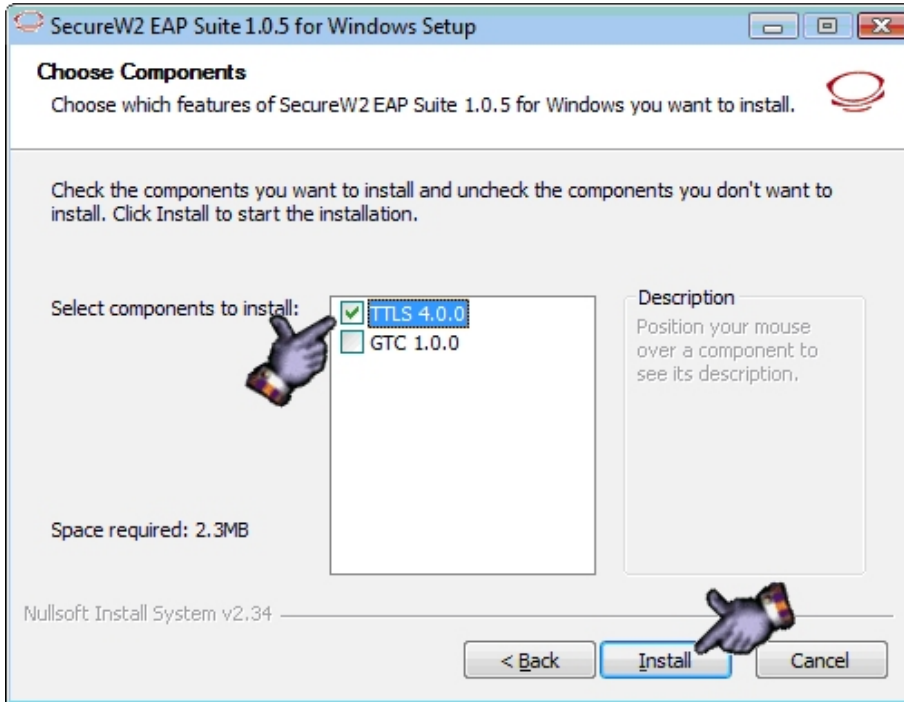
The installation will now start.



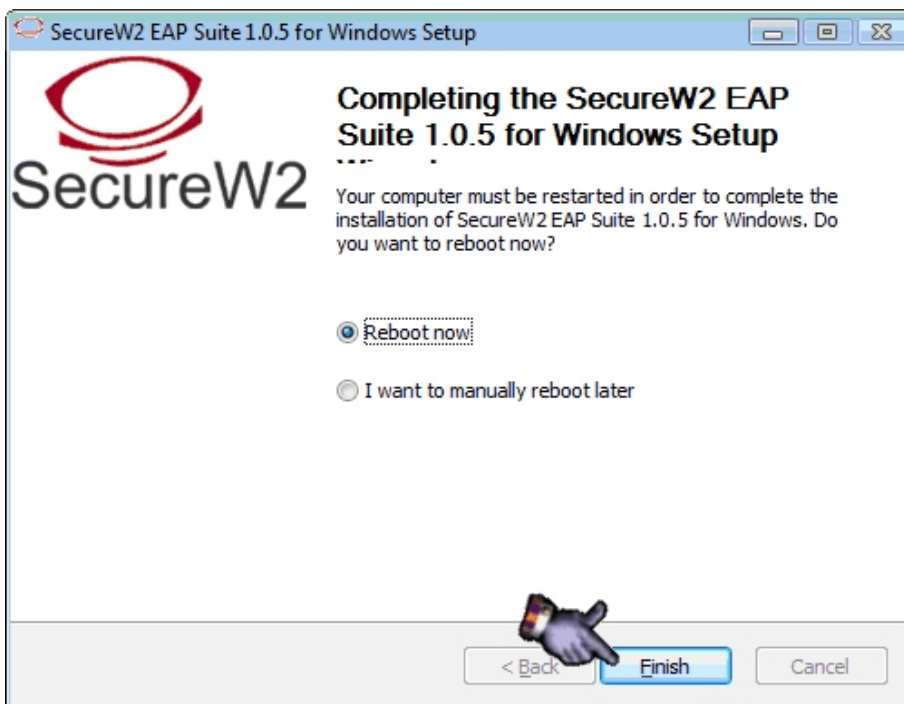
Press **Next**



Press **I Agree**



The space **TLS 4.0.0** shall be marked.  
Press **Install**



Press **Finish**

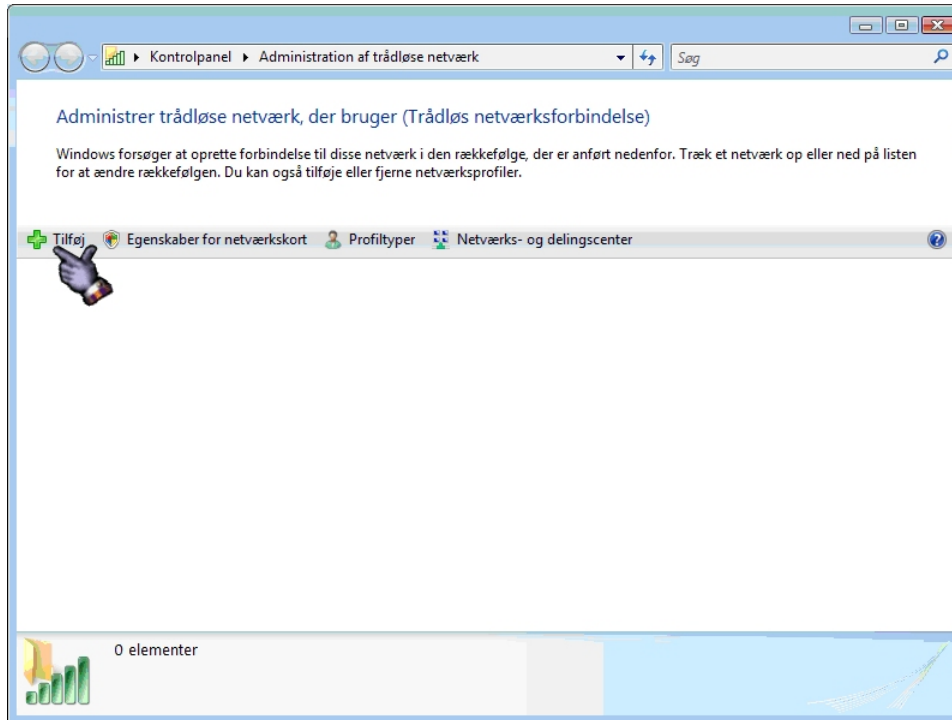
The computer will reboot, and the installation of the SecureW2 client is ended.



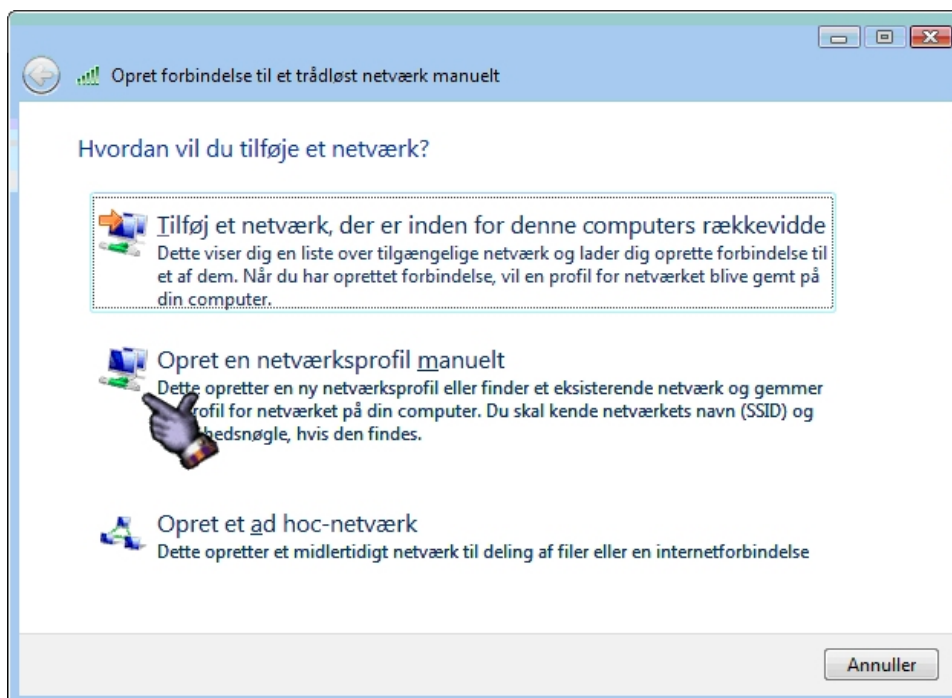
## Configuring the wireless network-connection at your computer

The Configurations takes place in the following menu.

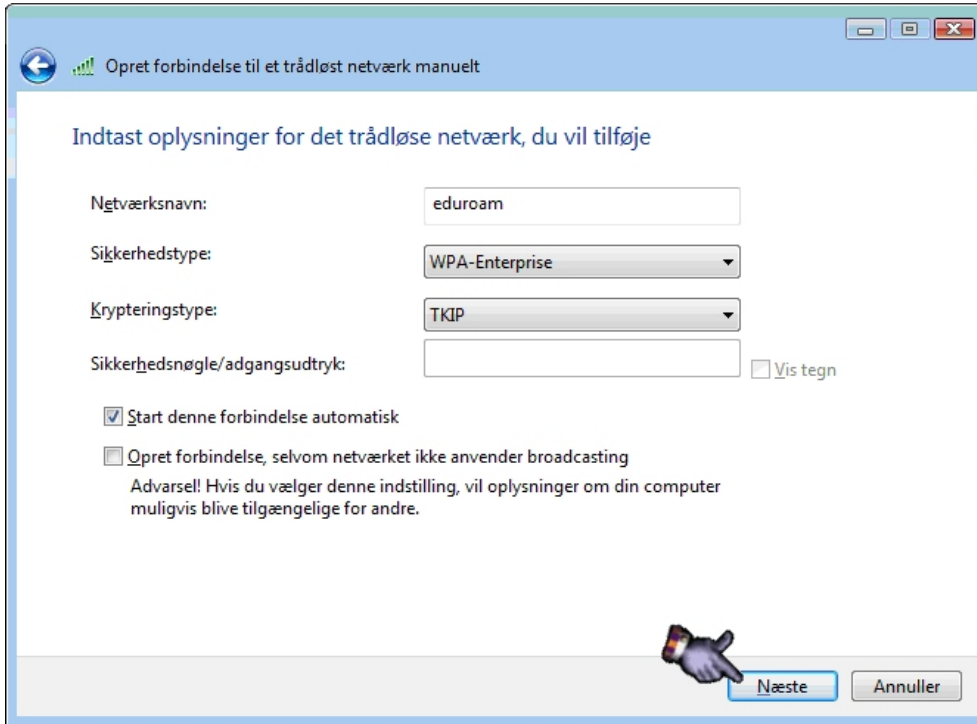
*Start → Kontrolpanel → Netværks- og delingscenter → Administration af trådløse netværk*



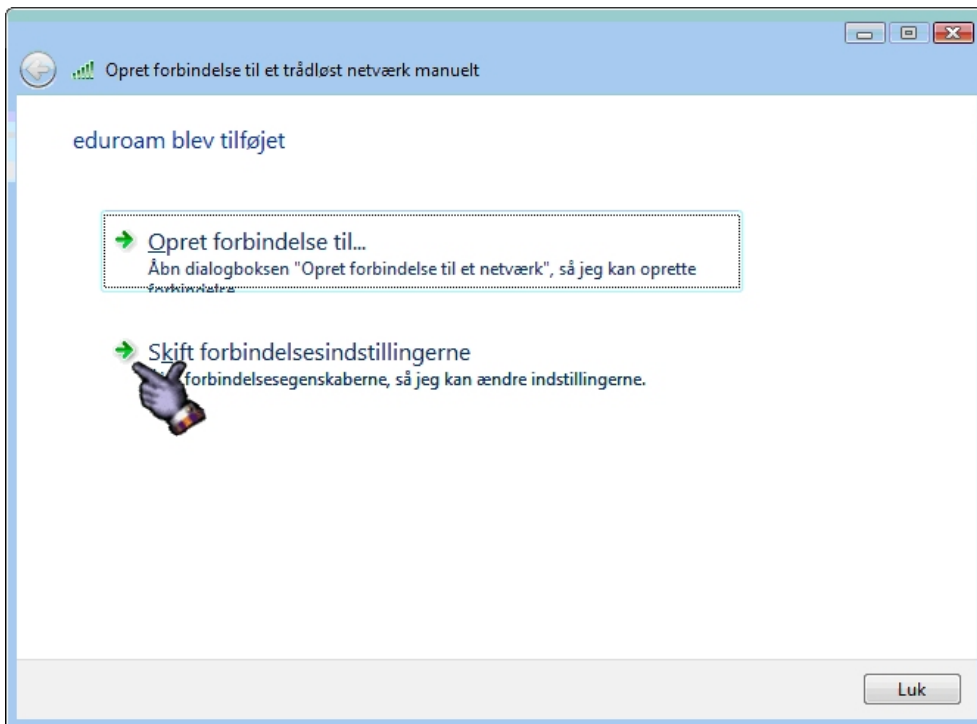
Press **Tilføj** to add a network to your computer.



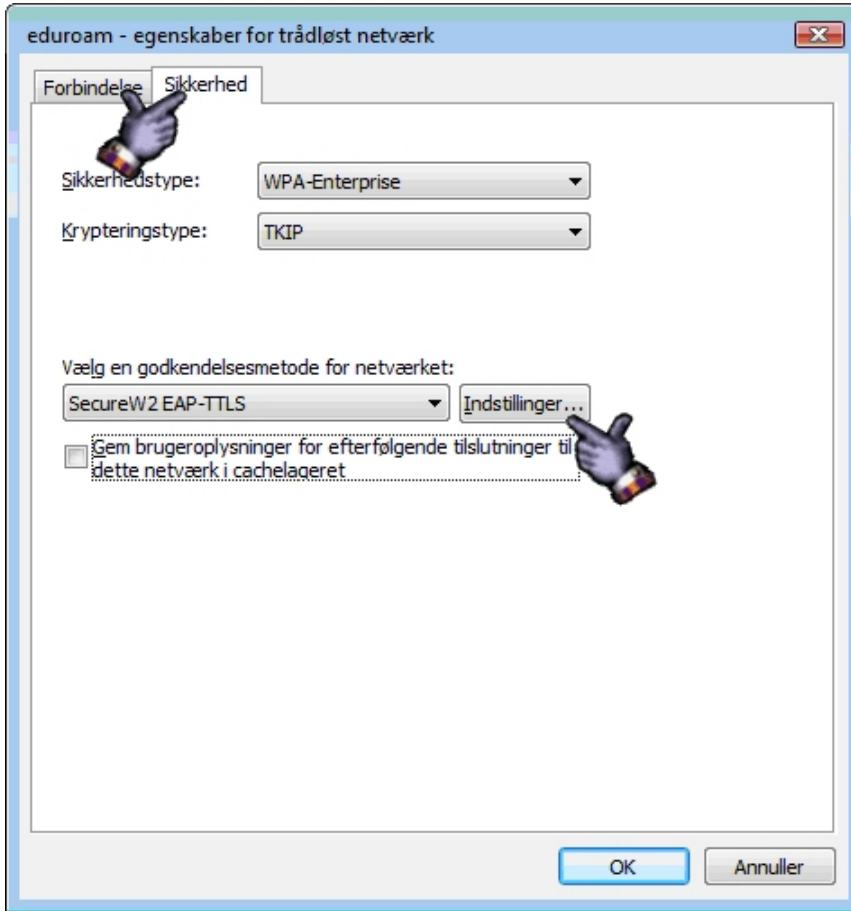
Press **Opret en netværksprofil manuelt**



Write **eduroam** (small letters) in the space **Netværksnavn**.  
Set **Sikkerhedstype** to **WPA-Enterprise** and **Krypteringstype** to **TKIP**.  
Press **Næste**.



Press **Skift Forbindelsesindstillingerne**



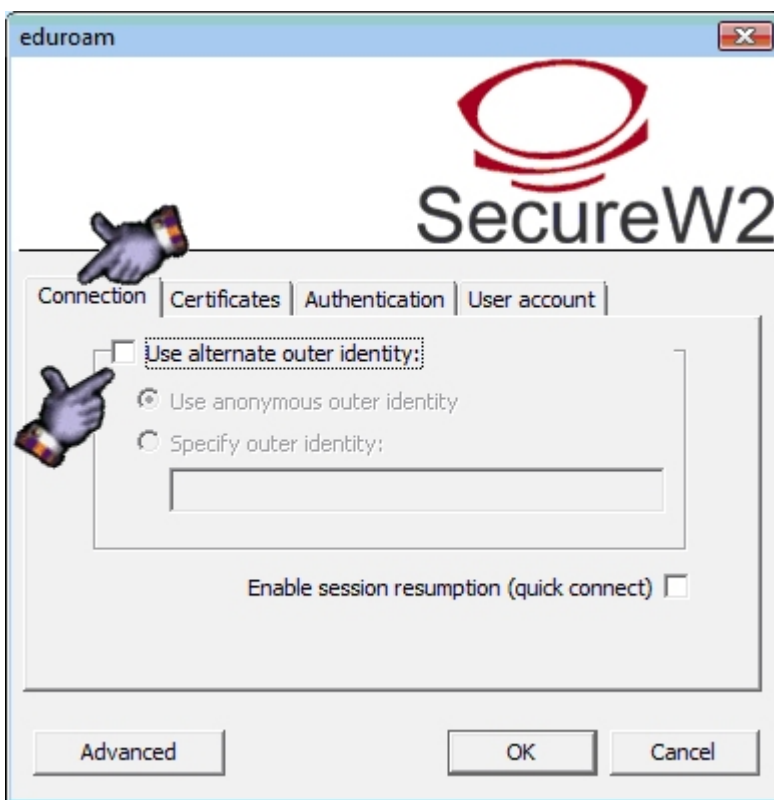
Choose the banner **Sikkerhed**.  
Set **Godkendelsesmetode** to **SecureW2 EAP-TTLS** and press **Indstillinger**.



Press **New** to configure a new EduRoam profil.



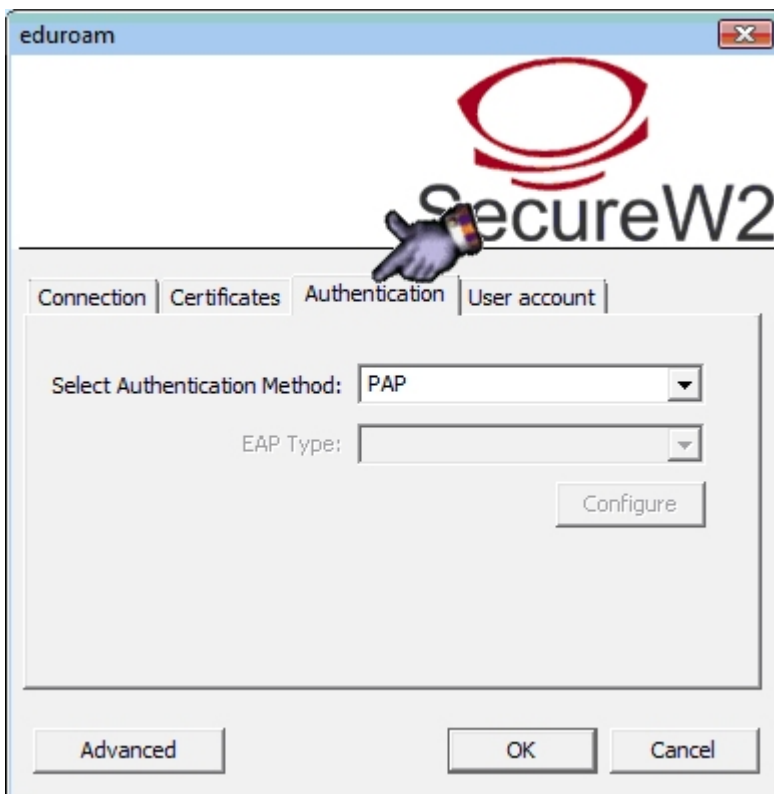
Write **eduroam** in the space **Profile ID**.  
Press **OK**.



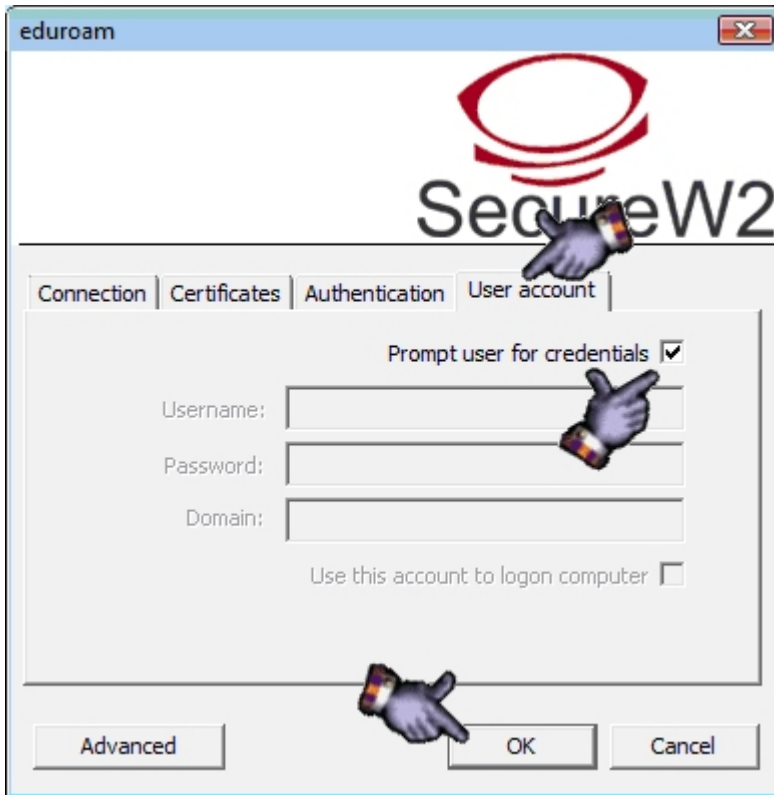
Choose the banner **Connection**.  
The space **Use alternate outer identity** should be unmarked.



Choose the banner **Certificates**.  
The space **Verify server certificate** should be unmarked.



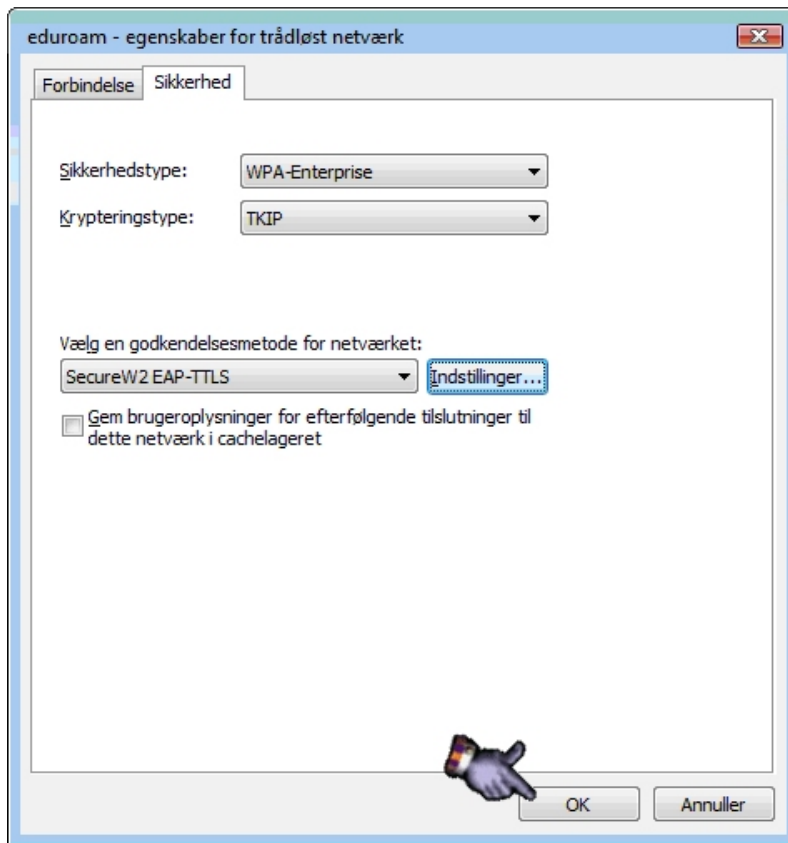
Choose the banner **Authentication**.  
Set **Select Authentication Method** to **PAP**.



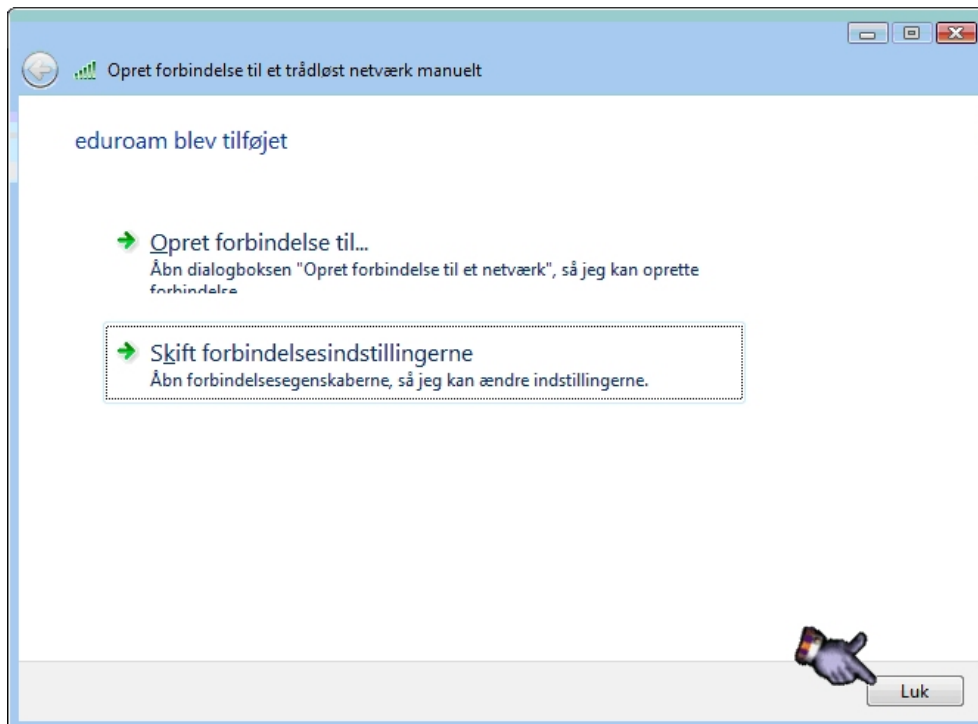
Choose the banner **User account**.  
Mark the space **Prompt for user credentials**.  
Press **OK**.



Press **OK** to use your new EduRoam profil.



Press **OK**.



Press **Luk** to end the configuration.

Your computer is now configured to use the eduroam network when you are trying to reach a wireless network at the University of Aarhus or another institution which are a member of the eduroam.

## How to connect to the network

You should be able to connect to the wireless network when the above procedure is ended. You shall do the following things to connect to the network.



This notification will emerge, and

then you should press it.



Insert your username (eduroam id) and password in this window

## Username/Password

Students

Username (eduroam id): studentnumber @ post.au.dk

Password: Your password from self-service

Staff

Username (eduroam id): Your email address at AU.

Password: Your password from self-service

Visitors

Please log in using the user name and password that your hosts have given you.

Visitors from other eduroam-institutions

Please log onto eduroam using your user name and password from your own institution.

Contact your own institution for information about its participation in eduroam, and about setting you up as a user if necessary.

If you encounter any problems when using the wireless network, please contact the IT department of the faculty at which you are a student, member of staff, or visitor.

## Setup guides to other Operating Systems

You can find more information and setup guides for other operating systems on the website [www.eduroam.au.dk](http://www.eduroam.au.dk). Similarly you can also find setup guides in Danish and links to downloading of the SecureW2 client.

## About eduroam

You can read more about the eduroam cooperation on the Danish eduroam website ([www.eduroam.dk](http://www.eduroam.dk)) or on the international website ([www.eduroam.org](http://www.eduroam.org)).